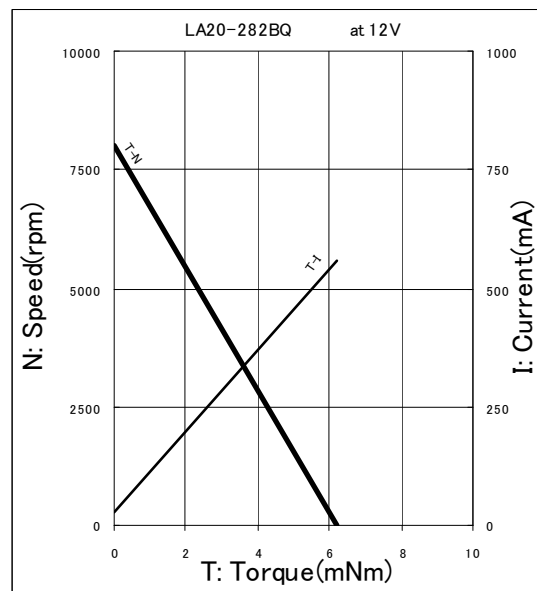
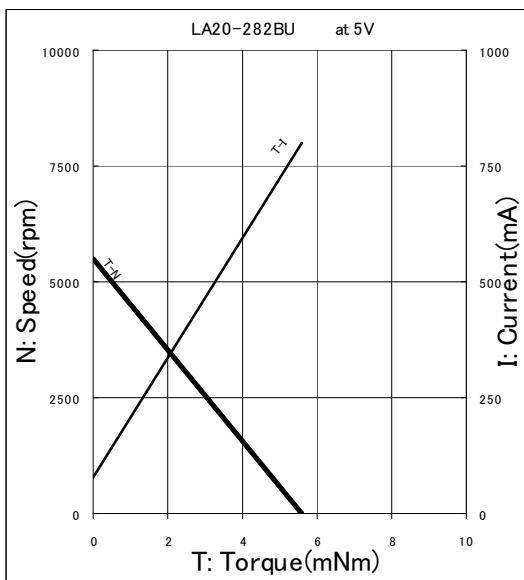
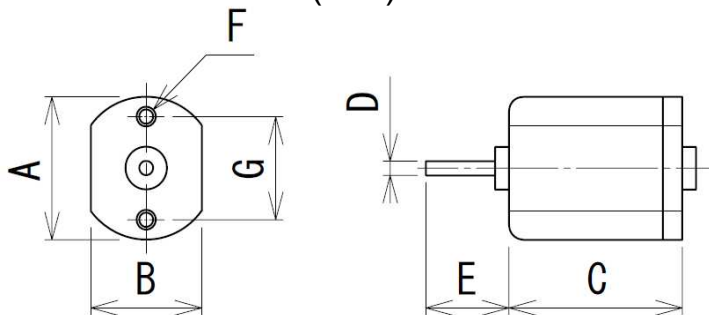


- Voltage variation (5V, 12V)
- RoHS Compliant

Model	Voltage DC	Rated Current (mA)	Stall Current (mA)	Rated Torque		Stall Torque		Rated Speed (rpm)	No Load Speed (rpm)
				oz-in	mNm	oz-in	mNm		
LA20-282BU	5	210	800	0.139	0.98	0.793	5.6	4500	5500
LA20-282BQ	12	125	560	0.021	0.147	0.878	6.2	6200	8000



Outline Dimensions (mm)



Model	A	B	C	D	E	F	G
LA20-282BF	φ 20	15.1	25	φ 2	6.3	M2	12
LA20-282BU							

Nidec Copal (U.S.A.) Corp.

373 Van Ness Ave Suite 130

Torrance, CA 90501

Tel: (310) 782-6102

Fax: (310) 782-6821

www.nidec-copal-usa.com

info@nidec-copal-usa.com