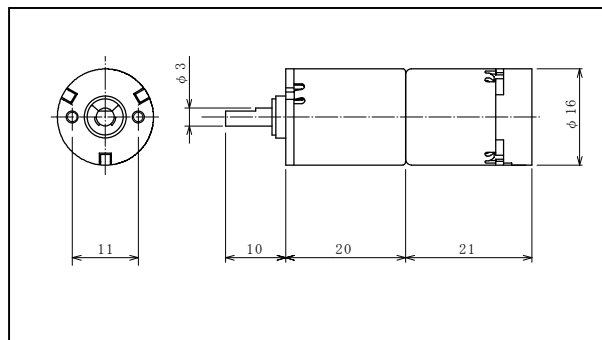


LB16-060-AA Brushless Gear Motor



Case :Metal
 Bearing :Sleeve Bearing
 Protection :FG
 :Current Limitation
 Operating Temp :0°C~50°C
 Net Weight :25.5g

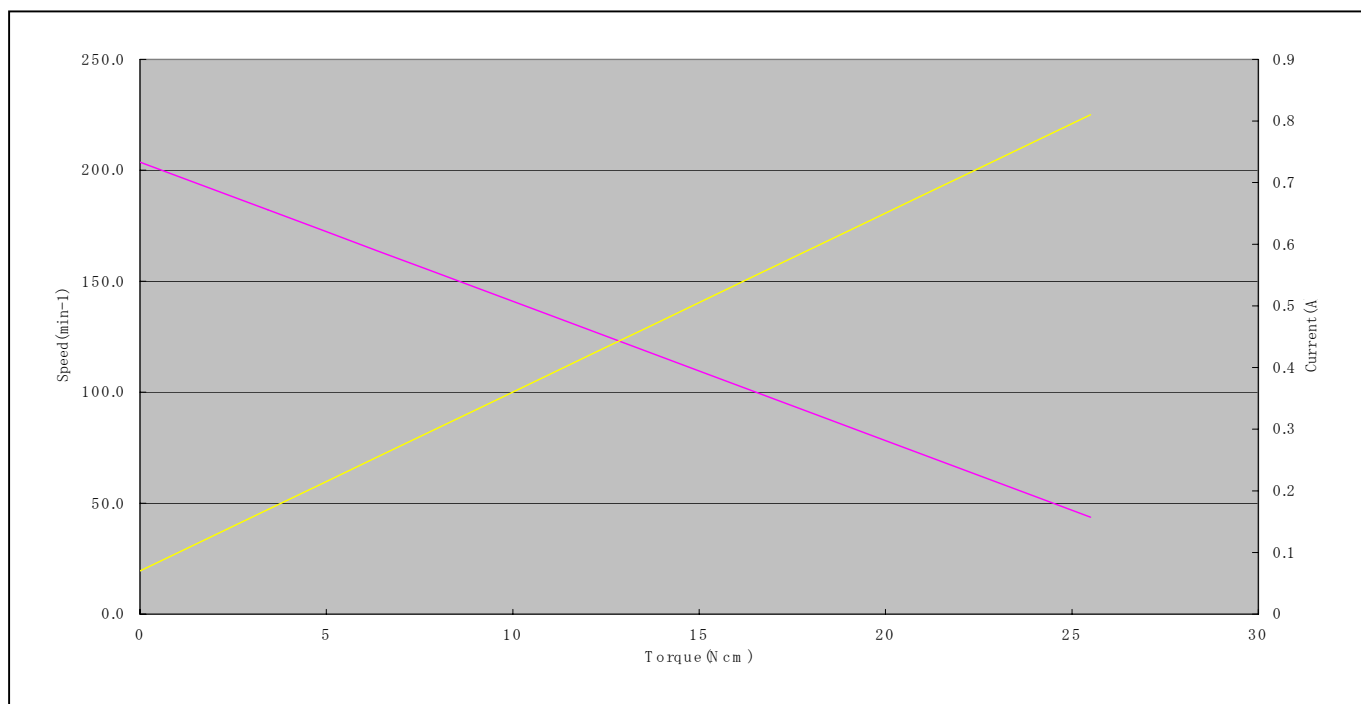
Major Characteristic Parameters (Reference)

Rated Voltage (Vdc)	Operating Voltage (Vdc)	Rated Torque		Load Range (N-cm)	Rotation	Gear Ratio
		oz-in	N-cm			
6	5.4~6.6	4.8	3.4	0~4.12	CW, CCW	60:1

No-Load Speed (min ⁻¹)	Rated Speed (min ⁻¹)	No-Load Current (mA)	Rated Current (mA)	Starting Torque		Starting Current (mA)	Sound Level (dBA)
				oz-in	N-cm		
200	180	70	170	17.4	12.3	800	45

Sound levels measured at 0.3 meter from the Motor Case.

● Performance Curves





LB16-060-AA

Input/Output Signal

Wire No.	Item	Standard	Wire Color
1	GND		Black
2	VM (Motor Power)	3.5~6.6VDC (Motor Speed Control)	Gray
3	Vcc	6VDC (5.4~6.6VDC)	Red
4	CW/CCW	H (Vcc) : CW, L (GND) : CCW	Green
5	FG	P-P : GND to Vcc 255 P/R (=Gear Ratio×4) Square wave signal	Yellow

Nidec Copal (U.S.A.) Corp.

373 Van Ness Ave Suite 180

Torrance, CA 90501

Tel: (310) 782-6102

Fax: (310) 782-6821

www.copal-usa.com

info@copal-usa.com