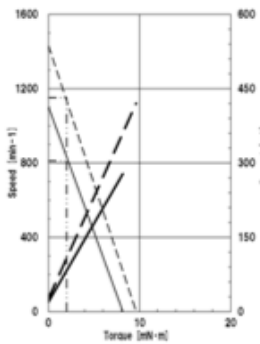


LA12BG000-15 series, ϕ 12 BRUSH MOTOR, Metal Spur Gear, 5V

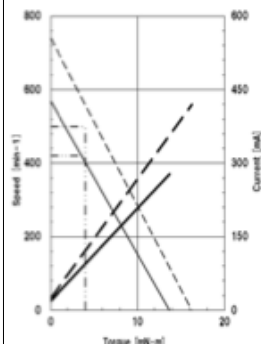
1. Spec/ 仕様一覧表

Voltage (V)	Nominal 呼称	Gear Ratio 減速比 1/X	Characteristic Typ	Torque(mNm) トルク			Speed(min ⁻¹)(Ref.) 回転数		Current (mA) 電流			All Length 全長	Mass (Ref.)
				Rated (Recommended) 定格(推奨)	Allowable 許容	Stall 起動	No load 無負荷	Rated load 定格	No load 無負荷	Rated load 定格	Stall 起動		
5	010	10.48	A	2	3	>7	1400	1150	<50	<180	<600	24mm	11g
			B			>5	1100	810					
	020	20.05	A	4	6	>10	740	500					
			B			>8	570	420					
	050	50.76	A	8	12	>25	290	230					
			B			>20	220	160					
	100	107.25	A	16	24	>50	140	110					
			B			>40	105	80					
	150	145.98	A	20	30	>60	100	80					
			B			>55	75	55					
	300	298	A	40	60	>135	50	35					
			B			>100	40	30					

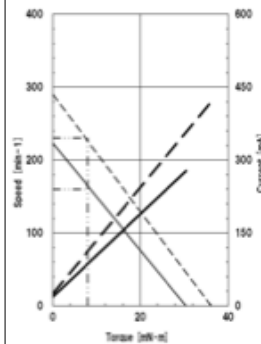
GEAR 010



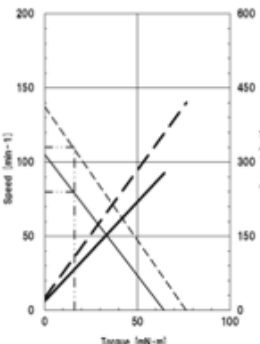
GEAR 020



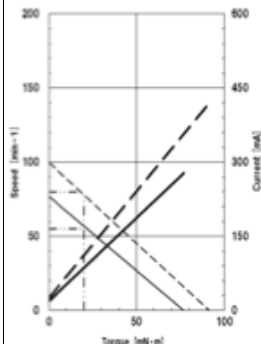
GEAR 050



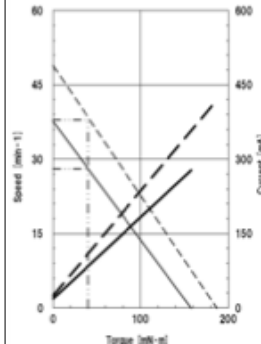
GEAR 100



GEAR 150

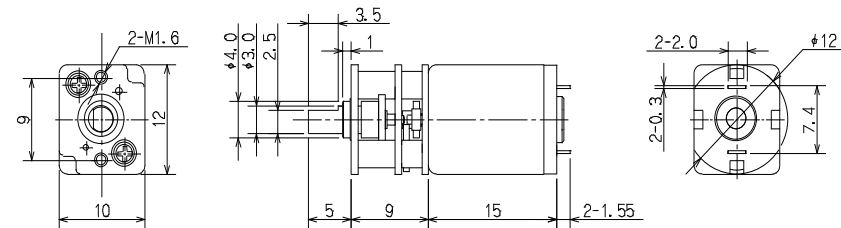


GEAR 300



--- : SPEED A — : SPEED B
- - - : CURRENT A — : CURRENT B

2. Outline drawing/ 概略寸法図



Characteristics of the motor alone (Ref.)

